

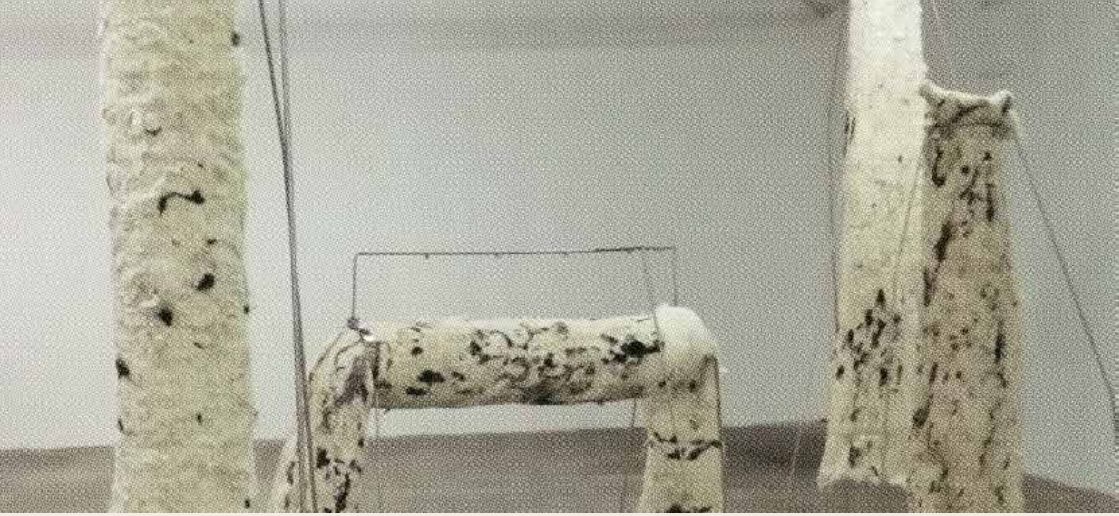
# Francesca Polizzi

---

*Where matter remembers*

RIZZUTO GALLERY

Palermo — Düsseldorf — 2026



## What remains when form dissolves

---

There is something deeply unsettling about wool. It carries the warmth of a living body long after that body is gone. Francesca Polizzi begins there — at the threshold between presence and absence, between the animal and the abstract.

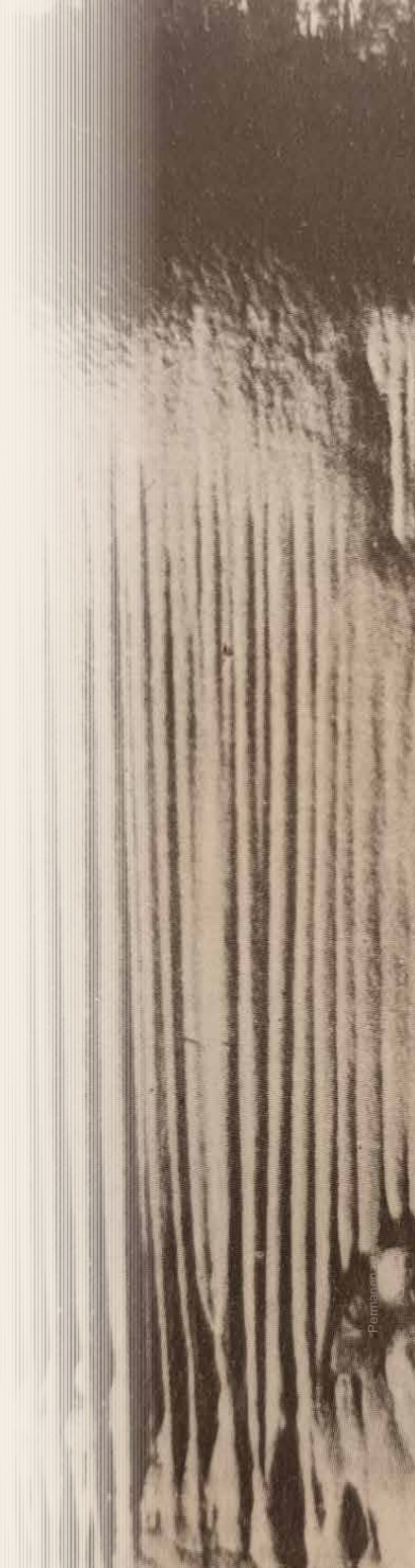
Her works are made of raw wool, wax, rosin, and brambles. She intervenes from the earliest stages — shearing, washing, carding, felting — transforming these materials through a process that is simultaneously rational control and deep sensory immersion.

What emerges are sculptural bodies, images printed on felt, and large-scale installations that function as apparitions — revelations of forms whose origin has been lost. Elements that wander through memory, restless and elusive, like lands that emerged from the sea and then disappeared.

In works like *Lamentazioni*, cylindrical wool bodies hang from steel exostructures — the unstable porosity of fibre in dialogue with the coldness of metal. A vertical tension that lifts the object beyond function, toward something other.

In serial works such as *Regressione*, repetition becomes erosion. The same image, printed on layers of wool, undergoes progressive material variation until the form itself begins to disappear.

*"Each piece is a fleeting revelation — an image that, while being distant, is perceived as intimately close."*





---

## Lamentazioni

2019

Raw wool and steel — installation

*Die Grosse, Kunstpalast, Düsseldorf, 2021*



---

## Deliquio [3]

2022

Rosin and brambles — glass vitrine

60 x 60 x 26 cm

*Amber forms suspended between preservation and decay.*



### **Tillite #9, 2025**

Encaustic and oil on raw wool felts — 82 × 62 × 5 cm



### **Epifania**

2022

Encaustic on  
raw wool felts

*The image surfaces like a memory not yet fully recalled.*

# Process & Material

---

Polizzi begins with raw wool — unwashed, uncarded, still carrying the animal's warmth and scent. Through shearing, washing, and felting, she transforms it into a surface capable of receiving images and memory.

The heated wax penetrates fibre, sealing pigment within its structure — an irreversible process that mirrors how memory embeds itself in the body.



## Regression, 2020

Inkjet on wood — 35 x 25 cm (x7 elements)

*Seven identical panels. Seven different disappearances.*



## **Tillite #7**

2024

Encaustic on raw wool felts

100 × 250 × 20 cm — 2 elements

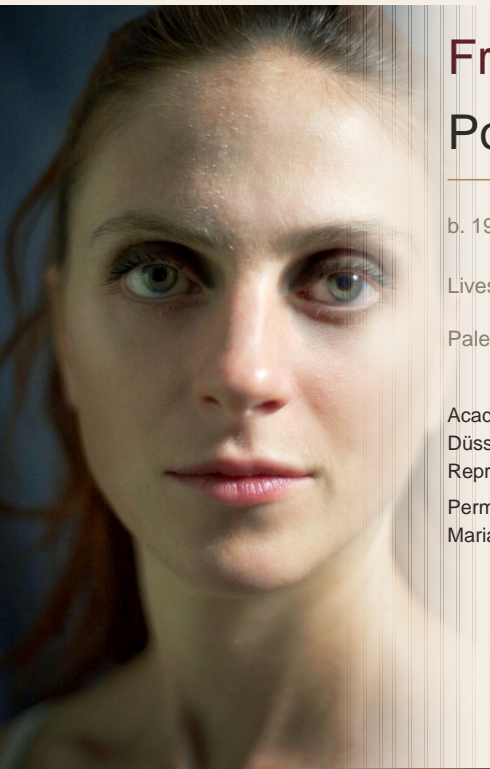
*Two monumental panels face each other like geological strata exposed by erosion — mineral landscapes compressed into felt, carrying the weight of deep time.*

## INSTALLATION VIEW

*Lamentazioni — RizzutoGallery, Palermo*



*"The fibre assumes a liminal value between waste and relic — proceeding with equal intensity in the emergence of the image as form, and of the image as surfacing."*



# Francesca Polizzi

---

b. 1988, Palermo, Italy

Lives and works between  
Palermo and Düsseldorf

Academy of Fine Arts of Palermo — Sculpture. Residencies:  
Düsseldorf (2018), Cité Internationale des Arts, Paris (2025).  
Represented by RizzutoGallery since 2022.

Permanent collections: Stadtmuseum Düsseldorf, Museo Santa  
Maria della Scala, Siena.

---

## Selected Exhibitions

---

- |      |   |
|------|---|
| 2026 | <b>Beringia</b> Gibellina Capitale dell'Arte Contemp.                       |
| 2025 | <b>Cité Internationale des Arts</b> Residency, Paris                        |
| 2024 | <b>There is a crack in everything</b> RizzutoGallery, Düsseldorf            |
| 2024 | <b>Francesca Polizzi</b> Johanna Ey Foundation, Düsseldorf                  |
| 2024 | <b>Pinakothek'a</b> Palazzo Sant'Elia, Palermo                              |
| 2022 | <b>Il Profumo delle Fiabe   Rosaspina</b> Museo S. Maria della Scala, Siena |
| 2021 | <b>Die Grosse</b> Kunstpalast, Düsseldorf                                   |
| 2020 | <b>In Antis</b> RizzutoGallery, Palermo                                     |
| 2019 | <b>Solo gli inquieti sanno...</b> Palazzo Ziino, Palermo                    |
| 2018 | <b>Wir sind Tiere</b> Atelier Am Eck, Düsseldorf                            |



## Between the Built & the Living

---

Polizzi's interest in space manifests through the recovery of historical architectural elements, such as the muqarnas — the honeycomb ornament typical of Islamic architecture. She empties its decorative function to expose its structural, organic, and fractal genesis.

By creating these structures in wax or through brambles and acacia thorns, the artist reconnects the architectural fragment to its natural root — the hive. A meeting point between the constructed and the living, where geometry remembers its origin in nature.



# RIZZUTOGALLERY

Palermo — Düsseldorf

---

[www.rizzutogallery.com](http://www.rizzutogallery.com)

[info@rizzutogallery.com](mailto:info@rizzutogallery.com)

Francesca Polizzi

*Palermo — Düsseldorf*